

The background features several abstract geometric patterns composed of thin, colorful lines in shades of blue, yellow, red, and brown. These patterns are arranged in a way that suggests architectural or structural elements, with some lines forming triangles and others forming more complex, interconnected shapes. The overall aesthetic is modern and graphic.

Aug 6 Shareout

AUGUST 6, 2024



With gratitude, 4Culture works on the ancestral and unceded lands and waters of Lushootseed-speaking peoples, especially of the Duwamish, Muckleshoot, Puyallup, Snoqualmie, Suquamish, and Tulalip tribes, as well as those whose names we do not know. Today many Indigenous peoples live and thrive here. We commit to repairing the harmful historic relationship between 4Culture and Native peoples in King County through cultural funding and commissioning opportunities that prioritize Indigenous communities.

Agenda

1. Welcome – overview
2. 2024 Doors Open Update
3. Doors Open Programs in 2025 presentations
 - Sustained Support
 - Building for Equity
 - Public School Cultural Access
4. Q+A



Doors Open-Funded Grant Programs

2024 Programs – Sept 4 deadline

1. Sustained Support - \$24 million
2. Doors Open Facilities - \$24 million

Beginning in 2025

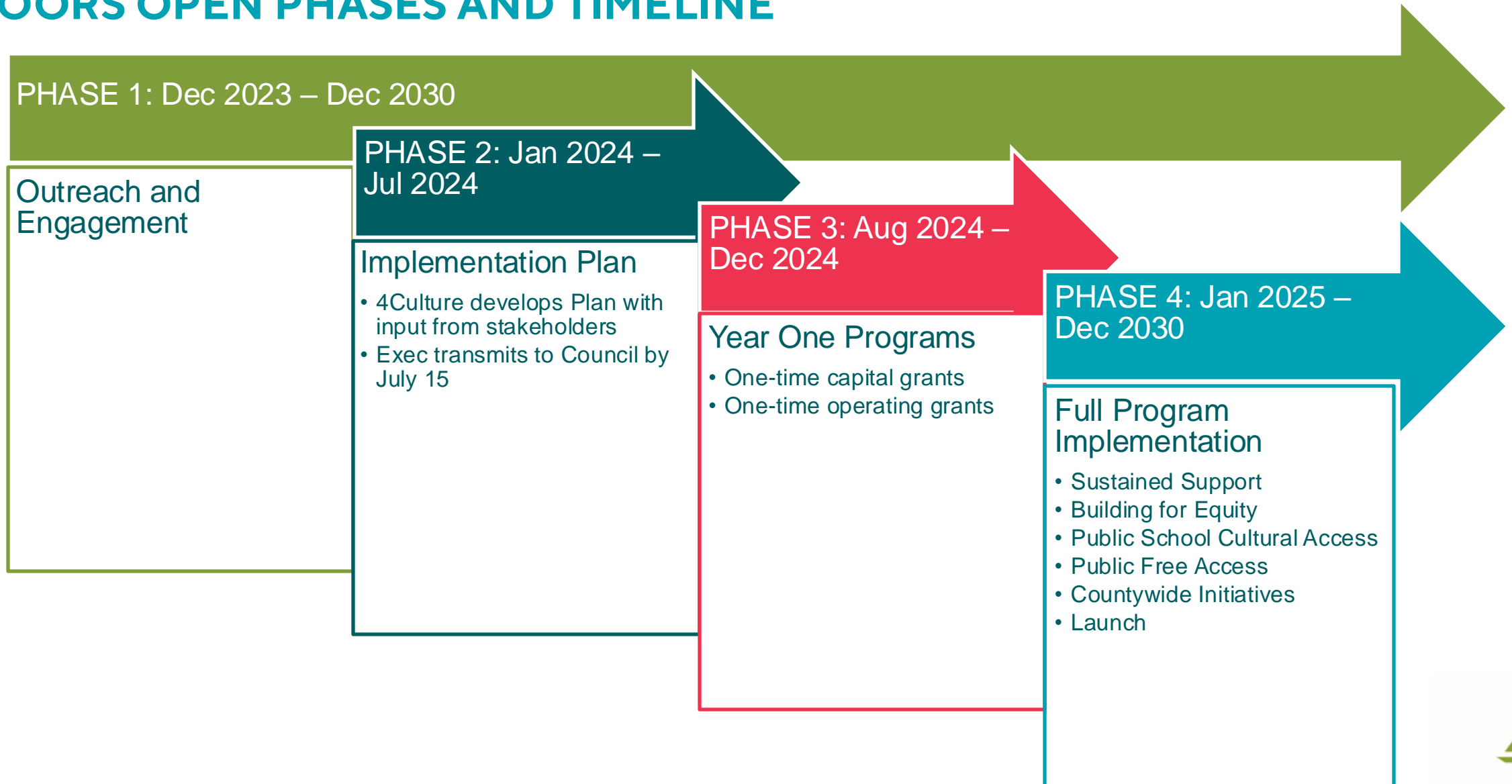
1. Sustained Support
2. Building for Equity *(includes Facilities grants)*
3. Public School Cultural Access *(new in 2025)*
4. Public Free Admission *(new in 2025)*
5. Countywide Initiatives *(new in 2025)*
6. Launch *(new in 2025)*



© J Tucker - Sticks & Stones Photography
Photo by J Tucker, Sticks & Stones Photography

Note: Other recurring grant programs run by 4Culture (project grants, equipment grants, etc.) will also continue in 2025.

DOORS OPEN PHASES AND TIMELINE





2024 Doors Open Program Update

AUGUST 6, 2024

Sustained Support

General operating support to meet the ongoing needs of cultural and scientific organizations, including but not limited to assistance with production costs, rent, utilities, payroll, and other basic annual expenses.

Awards are provided as **unrestricted** operating funds.

This cycle will provide **ONE YEAR** of funding for 2025 programs

Funding will be disbursed in 2025

Total funding available: \$24M

- The last Sustained Support cycle distributed approximately \$3.6M

Sustained Support Criteria

Resilience: Plans to remain in operation through 2025; demonstrated organizational adaptability to changes in your community, and responsiveness to your community's needs.

Public Benefit: Substantial public benefit through programs, activities, and services. Public benefit may include free or reduced cost admission, events, or programs that increase access to culture in King County.

Advancing Equity: A focus on marginalized communities, especially communities that are disproportionately impacted by structural racism.

Economic Impact: your organization stimulates the local economy through spending on wages, goods, services; promoting tourism and visitor -related spending at local businesses; and contributions to community well-being and quality of life, which have indirect economic benefits.

Discipline-specific priorities: Some disciplines use specific contributions related to their fields.

Sustained Support Awards

Award amounts will be determined using a combination of
Organization's **budget size**

Average score as determined by the review panel

Eligibility for **Geographic Equity Investment** (location outside of the City of Seattle AND/OR in a Community of Opportunity, a census tract designation that accounts for health and socioeconomic outcomes)

About Doors Open Facilities Grants

Doors Open Facilities grants provide funding for **building, remodeling, and buying specialized space** that houses and facilitates cultural work in King County.

Organizations with a **primary purpose** related to arts, heritage, historic preservation, and science are eligible to apply.

By centering communities that have historically faced barriers to purchasing and stewarding cultural space, Doors Open is incorporating a **racial and geographic equity lens** into the funding program.



Organizational Eligibility

- Be recognized as one of the four Disciplines: **Arts, Heritage, Preservation or Science & Technology**
- Meet all **Structural Requirements** (Incorporation as a nonprofit, 501c3 status, located in King County, etc.)
- Provide a minimum of one General **Public Benefit** **AND** provide a minimum of one **Equity Inclusion Public Benefit** AND/OR one **Geographic Inclusion Public Benefit**

Structural Requirements

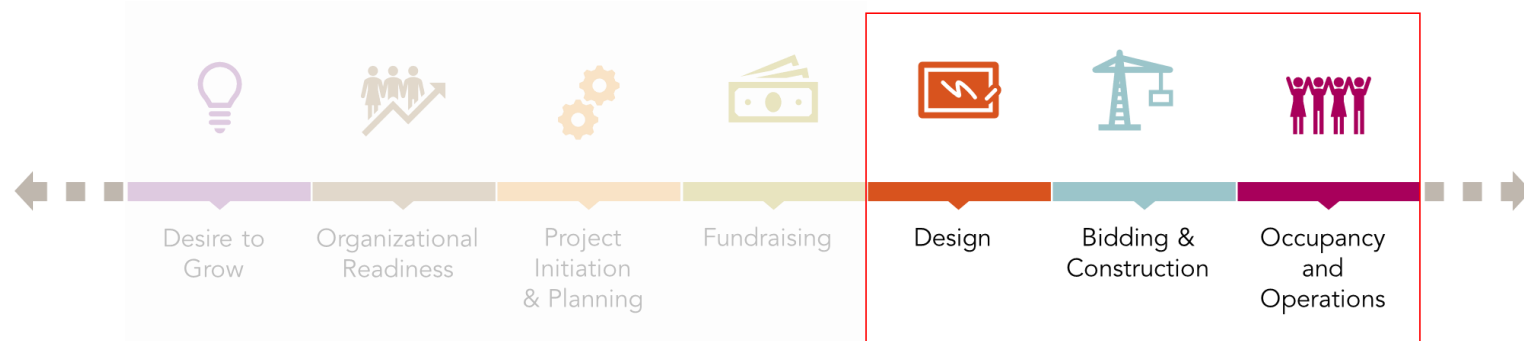
- A **two-year operating history**
- Recognized as a **501(c)(3)** OR have an **eligible Fiscal Sponsor**
- **Incorporated** in Washington as a Nonprofit Corporation
- Have a **Board of Directors**
- Based in and conduct a majority (51%+) of mission-based, in-person, public-facing activities in **King County**
- **Not** a school, public agency, regrantee organization, or media organization



Seattle JazzED

Project Eligibility

- **Site Control:** Your organization must have site control of the project location by the application deadline (September 4, 2024). This can mean property ownership, or a long-term lease (10 years minimum or 5 years with an option to renew), or a partnership agreement. Documentation will be required in the application.
- **Shovel Readiness:** Your project must be shovel-ready in two years (by December 31, 2026).
- **Project Stage:** Your project cannot only consist of early project planning steps. The project must include acquisition, construction, and/or renovation work. If the application is not for a complete project, the proposed project must complete a significant phase toward having a usable cultural facility.



About Doors Open Facilities Grants

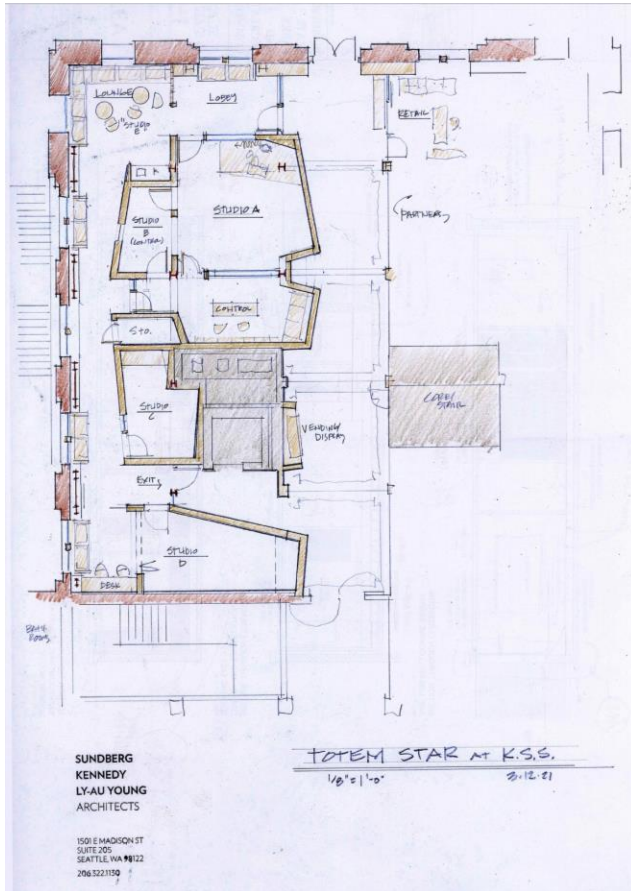
There are four funding tracks for this program:

Total Project Budget Size	Maximum You Can Request Through This Application
\$250,000 and under	100% of your Project Budget
\$250,001 - \$1,000,000	\$250,000 + 50% of Your Project Budget Over \$250,000
\$1,000,001 - \$10,000,000	\$625,000 + 15% of Your Project Budget Over \$1,000,000
\$10,000,001 or more	\$1,975,000 + 5% of Your Project Budget Over \$10,000,000 up to a \$2,500,000 maximum request

For example:

- An organization with a project budget of \$100,000 can request up to \$100,000
- An organization with a project budget of \$750,000 can request up to \$500,000.
- An organization with a project budget of \$5 million can request up to \$1,225,000.
- An organization with a project budget of \$25 million can request up to \$2,500,000.

Timeline for current applications



Totem Star

Sustained Support 2025 & Doors Open Facilities

Workshops

18 Workshops and Office Hours before the deadline

Application Deadline:

SEPTEMBER 4, 2024 @ 5 PM PT

Award Letters Sent:

BY DECEMBER 31, 2024

Contracting:

JANUARY – MARCH 2025

The background features several abstract geometric shapes composed of thin lines in teal, yellow, and red. These shapes are scattered across the upper and right portions of the slide, creating a modern, architectural feel. A large teal banner with a red and yellow vertical stripe on the left side spans the width of the slide, containing the main title and date.

Sustained Support

AUGUST 6, 2024

Using a Fiscal Sponsor

Fiscal sponsors must meet the same eligibility criteria as other organizations: They must be **incorporated in Washington** as a **Nonprofit Corporation**, based in/focused on **King County**, and a **primary purpose** of the organization must be the advancement and preservation of one of the following disciplines:

- Arts
- Historic Preservation
- Heritage
- Science & Technology

Can fiscal sponsors work with more than one organization? **YES**

Can fiscal sponsors also apply for their own funding, along with sponsoring other groups? **YES**

What is Sustained Support?

- 4Culture's Sustained Support is its primary funding program for organizations. Recipient organizations typically receive two years of unrestricted funding that can be used for either production or operating expenses, including rent, salaries, utilities, insurance, etc.
- Note that this coming cycle will be a single year of Sustained Support; in late 2025, organizations will apply for the next two years of funding, and we'll be back on our regular two-year schedule.

What is Sustained Support?

- The goal of the Sustained Support program is to provide a dependable building block for each recipient organization's annual budget.
- Once an organization has been accepted into the Sustained Support program, they can depend on continuing to receive Sustained Support funding so long as:
 - They keep applying every cycle
 - They continue to provide artistic services and public benefit for King County residents and visitors
 - They continue to meet the required criteria for funding, as described in the guidelines and tutorials on our website

Four Sustained Support Programs:

- **Arts** Sustained Support funds organizations that produce or support artistic experiences for King County residents and visitors, including cultural festivals, dance, film, literature, music, theater, visual arts, and more.
- **Heritage** Sustained Support funds organizations that explore the people, places, communities, events, and themes of our region's past.
- **Historic Preservation** Sustained Support funds organizations that promote stewardship, advocacy, and educational opportunities around historic preservation.
- **Science and Technology** Sustained Support is a new program that will fund organizations that provide access to science and technology experiences for King County residents and visitors, ranging from robotics to zoology.

Applying for Sustained Support

- Organizations apply with an overall description of their organization and its activities.
- They do *not* need to specify how they will spend the funds.
- They *do* need to discuss the services and public benefit they provide for King County residents and visitors.
- Applicants do not request an award amount. Awards are based on:
 - each organization's budget size
 - the scores they receive from the adjudicating panel
 - their geographic location, as some areas of King County have less access to resources (financial and otherwise) than others.

Applying for Sustained Support

- Applicant organizations do not specify the funding source for their award. 4Culture staff will determine if each organization is eligible to be funded from the new Doors Open revenue; organizations that are not eligible for Doors Open will continue to receive funding from 4Culture's long-time funding source, the King County Hotel/Motel Lodging Tax.
- 4Culture will endeavor to make all awards comparable with the awards received by organizations of a similar budget size, regardless of whether the organization is eligible for Doors Open or is funded from Lodging Tax. However, because Doors Open is a larger funding source, exact parity may not be possible.

Building for Equity

AUGUST 2024

Purpose

Building for Equity is an interdisciplinary Facilities grant program which provides a unique combination of funding, technical support, and strategic partnerships.

Program Focus

Building for Equity is geared toward dismantling racism in cultural facilities funding and fostering equitable development throughout all corners of King County. Communities that have historically faced barriers to purchasing and stewarding cultural space are at the center of this program.

Program Overview

- **(1) Project Development and (3) Facilities grants** will be available through Building for Equity in 2025
- Technical Assistance for pre-application support
- Prioritizing racial equity and geographic access
- Public Benefits required

Grant Programs

Building Community Facilities Grant

Facility Project budgets \$10m and under

Opens Feb – Closes April

- Property acquisition, renovation, construction of cultural facilities

Project Development Grant

(Previously known as Capacity Building Grant)

Facility-focused planning and development

Opens June – Closes August

- Capital campaign development, feasibility studies, pre-design
- Planning and development for facility project

Grant Programs

Anchoring Community Facilities Grant

Facility Project budgets \$10m+

Opens Sep – Closes Nov

- Property acquisition, renovation, construction of cultural facilities

Native Cultural Facilities Grant

Funding facilities and specialized spaces that serve Native communities through the preservation and advancement of culture.

Opens Sep – Closes Nov

- Property acquisition, renovation, construction of cultural facilities

Public Benefit

- Reporting on public benefit will be required to receive payment. Public benefit may include free or reduced cost programs that increase access to culture or science.
- Participating in collaborative relationships with other cultural organizations, individuals, and groups to extend the reach and impact of a project or program for the benefit of the public.

Public Benefit

- If awarded, your organization may be asked to provide time to support the future of 4Culture's Facilities grants. You may be asked to complete a survey, participate in a focus group, interview with 4Culture staff, provide a testimonial, or present at a 4Culture workshop.
- Organizations receiving larger facility awards, may be required to provide free cultural space-use and/or technical support to a Building for Equity: Project Development awardee.

Field Resources & Services

- Building for Equity's Field Resources and Services page provides resources to help support organizations implementing their projects in ways that contribute to racial equity and equitable development.
- Ongoing webinars, workshops, and roundtable discussions will be provided addressing cultural facility project-based needs.
- Visit: 4culture.org/building-for-equity-field-resources



Public School Cultural Access

AUGUST 6, 2024

Program Overview



Roster of Cultural Programs



Funding for Student Transportation to Cultural Facilities



Funding for Cultural Organizations

Increase Public School Student Access to Cultural Education Experiences

Program Goals and Values

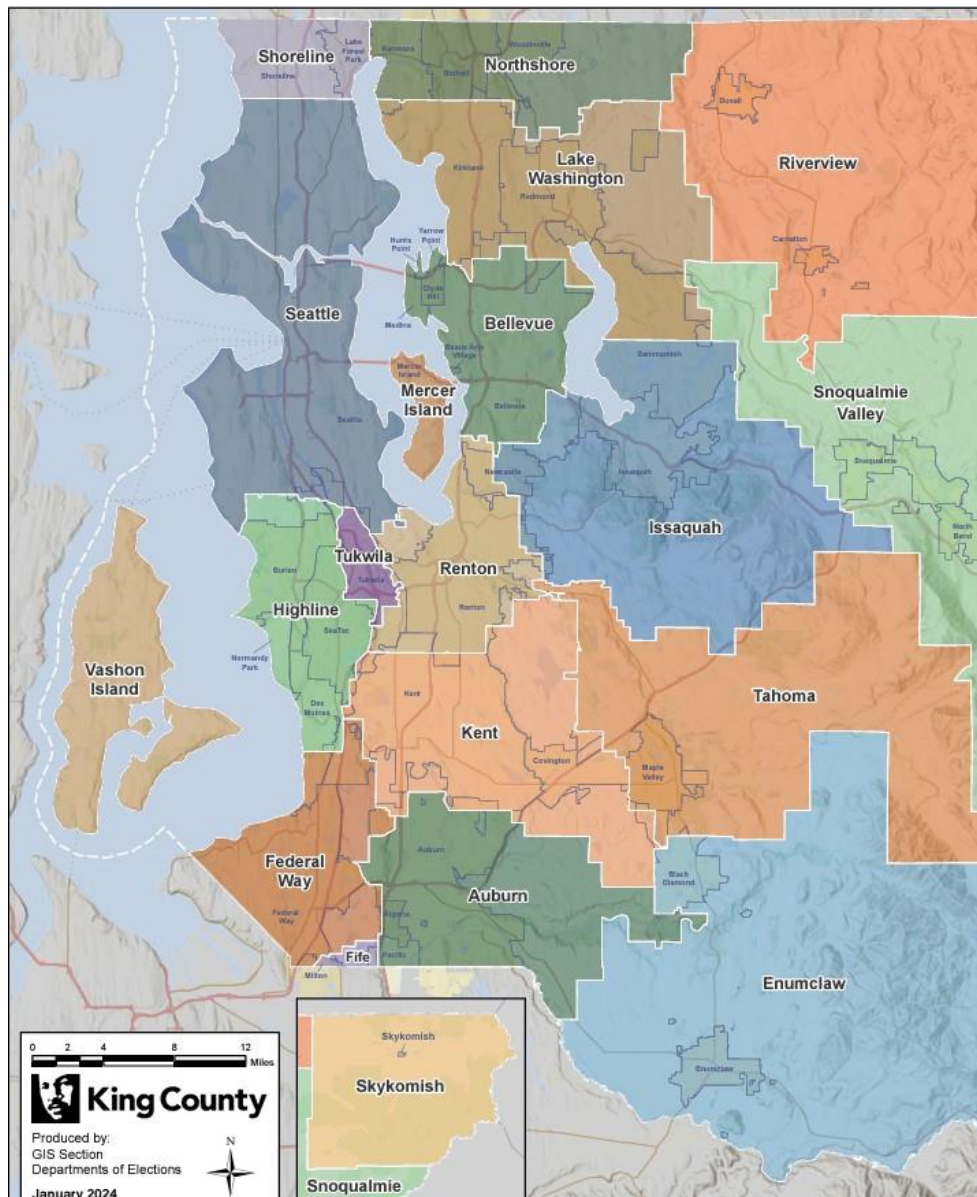
Goal:

Ensure that **K-12 public school students in all 19 King County school districts benefit from greater access to arts, science, heritage, and preservation organizations**, both through in-depth programs in their own classrooms and visits to cultural facilities.

Values:

- We will prioritize increased access to cultural learning for students from communities that have been **disproportionately impacted by systems of structural racism and other systems of oppression**. We will also prioritize cultural organizations from that represent these communities.
- We will prioritize increased access for both students and cultural organizations that are **located outside of established cultural centers**.
- We will prioritize students whose families qualify for free and reduced-price school meals in providing funding for transportation to King County science, arts, heritage, and preservation venues.
- We will work to **build and improve relationships** between public schools and cultural organizations throughout King County.

King County School Districts



- 19 School Districts + Muckleshoot Tribal School
- 476 Schools
- 286,095 students
- Districts are urban, suburban, and rural
- Range in size from 2 schools to 104 schools
- Where FRL is 40% or higher transportation

King County Cultural Organizations

Science



Arts



Heritage



Historic Preservation



- Potentially 320+ King County organizations
- 501(c)(3) Organization incorporated in WA State
- Principal location in King County
- Organization's primary purpose is related to advancing science, arts, heritage, or historic preservation
- Organization's primary audience for programs is the general public (public schools students included)

Project and Program Types



Field Trips



Residencies & Workshops

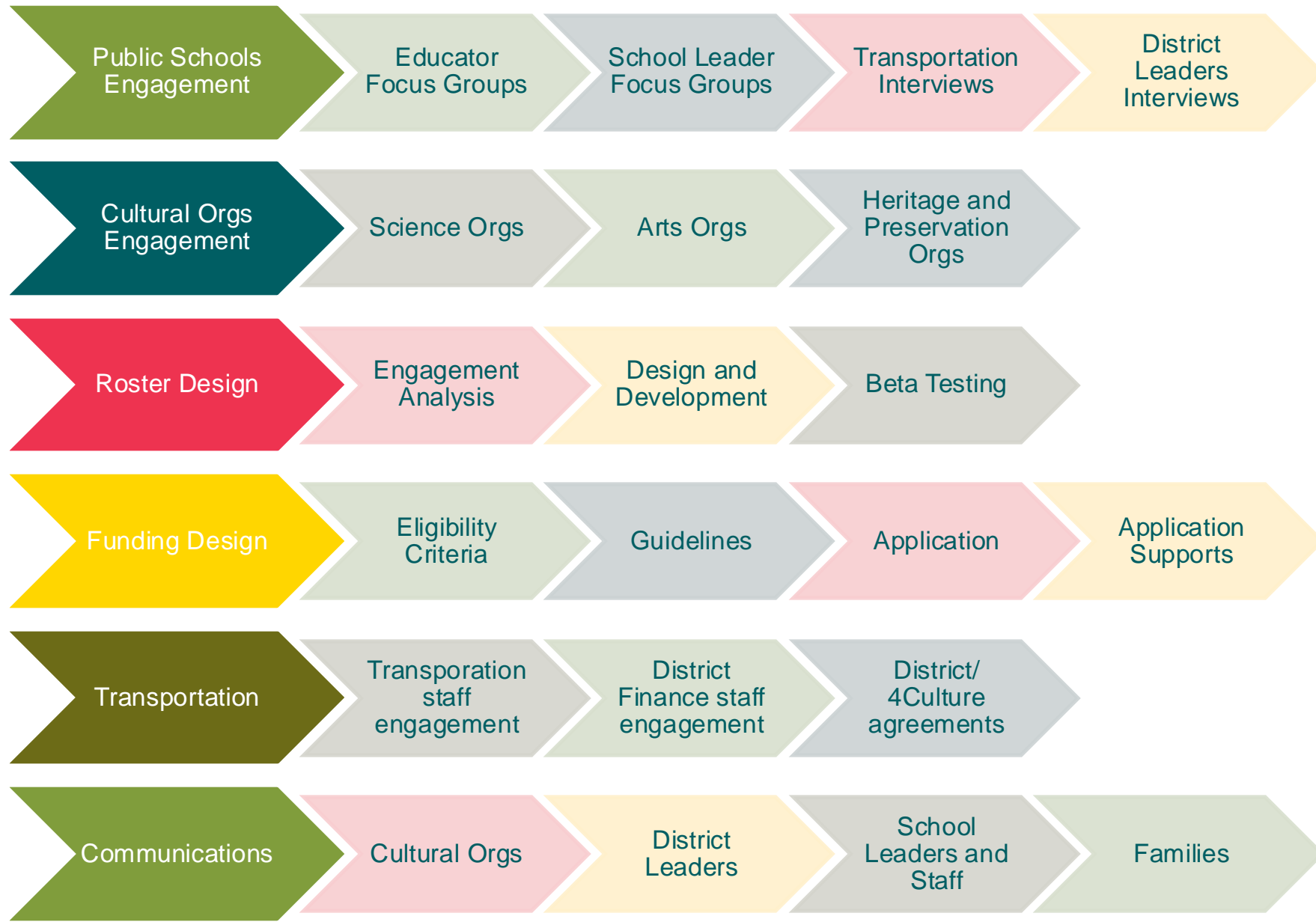


Out of School Time



Educator Professional Development

Public Schools Cultural Access Planning Process



Stakeholder Engagement Findings

Educators need programs that are:

- Highly interactive for students
- Make cultural connections for students
- Have clear connections to curriculum
- Accessible by language, disability

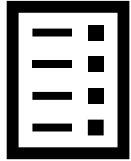
Organizations resources for:

- Staff to provide student programs
- Materials, supplies and equipment
- Translation and interpretation
- Curriculum development

Both Educators and Organizations want:

- Ways to connect to each other
- Funding for field trip transportation
- Equitable funding across districts and schools
- Programs that are customizable to meet student needs

The Roster



What is it?

An on-line list of science, arts, heritage, and historic preservation programs for K-12 students offered by King County cultural organizations.

Who is it for?



Primary Users: Public school educators and staff from the 19 King County school districts and the Muckleshoot tribal school.

Secondary Users:

- Students and families
- Organizations and agencies looking for partners

How will it work?



- The Roster will be a searchable & filterable online database accessed through the 4Culture website.
- Cultural organizations will use an on-line portal to enter information about themselves and their programs to populate the database.

Transportation Funding for Students



What is it?

Funding for students to travel to programming provided by King County science, arts and heritage/preservation cultural organizations.

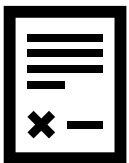
Who is it for?

4Culture must provide transportation funding to all schools in the 8 districts and tribal school where at least 40% of students qualify for Free and Reduced Lunch.



How will it work?

- 4C will have an MOU with each district and districts or their transportation vendors will invoice 4C and be reimbursed.



Grant Funding for Organizations



What is it?

Project-based grants to sustain, increase and improve access to cultural education experiences for all students in King County's 19 public school districts and tribal schools.



Who is it for?

King County science, arts, and heritage/preservation cultural organizations that provide education programs to K-12 public school students.



How will it work?

- An annual competitive grant program with a panel review.

Public Benefit

- *Increased access for all King County public school students to science, arts, heritage, and preservation learning and experiences from King County cultural organizations*
- *Greater accessibility for students regardless of family income, language spoken, physical disability, and neuro-diversity.*

Stay in Touch!

2024 Programs

Calandra Childers, Project Director 2024 Doors Open Program

calandra.childers@4culture.org

206-477-3398

Sustained Support

Bret Fetzer, Arts Program Manager

bret.fetzer@4culture.org

206-263-1599

Chieko Phillips, Heritage Program Director

chieko.phillips@4culture.org

206-263-1604

Dana Phelan, Historic Preservation Program Director

dana.phelan@4culture.org

206-263-1604

Fundisha Tibebe, Science Sustained Support
Manager

fundisha.tibebe@4culture.org

Building for Equity

Maya Santos, Building for Equity Program Manager

maya.santos@4culture.org

206-296-7580

Lauren Miles, Building for Equity Support Specialist

lauren.miles@4culture.org

206-263-3210

Public School Cultural Access

Nina Yarbrough

nina.yarbrough@4culture.org

206-477-7537

